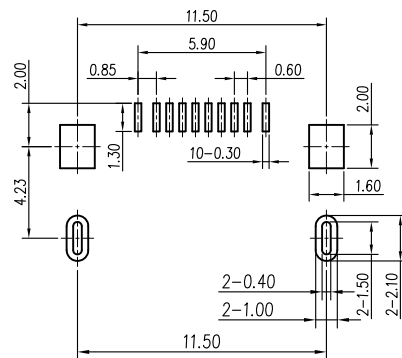
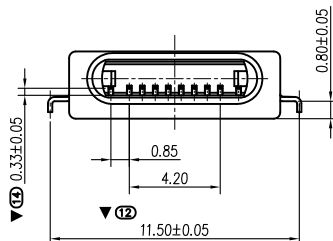
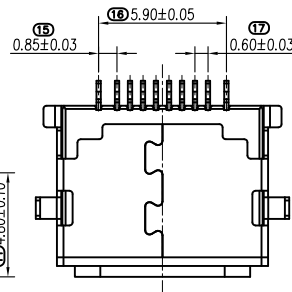
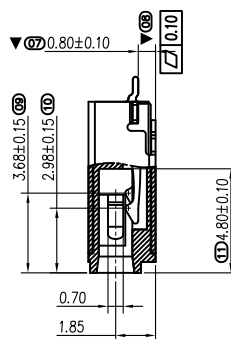
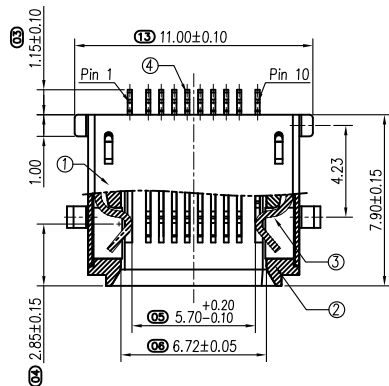
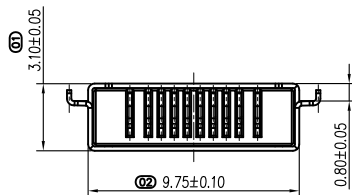


ROHS



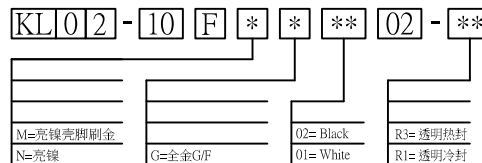
RECOMMENDED P.C.B HOLE LAYOUT
COMPONENT SIDE VIEW (TOLERANCE: +/-0.05)

PIN NO.	NAME	PIN NO.	NAME
1	DETECT1	7	DN2
2	GND	8	DP2
3	DP1	9	ACC2
4	DN1	10	DETECT2
5	ACC1	Shell	GND
6	PWR IN		

Specification:

- Electrical Characteristics:
Contact Current Rating: 1.5 Amperes Max.
Rated Voltage: 30V Max.
Dielectric Withstanding Voltage: AC 500V r.m.s.
Insulation Resistance: 100 MΩ Minimum.
Contact Resistance: 50 mΩ Maximum.
- Environmental:
Operating Temperature: -25°C~+85°C.
- Mechanical Characteristics:
Insertion Force: 15Nf Max.
Withdrawal Force: 3Nf Min.
Durability Cycles: 5000 Cycles.
- Make is FAI test Dimension
▼ Make is major test Dimension

4	CONTACT	Copper Alloy; AuNiSn; T=0.20mm;
3	LATCH	Stainless Steel; SUS304, T=0.30mm;
2	HOUSING	LCP Thermoplastic, UL94V-0;
1	SHELL	Stainless Steel; SUS304, T=0.20mm;
NO.	NAME	DESCRIPTION



07/06-17	yang		NEW-DWG		1
DATE	DR.BY	ECN.NO.	DESCRIPTION	MARK	VER.
-TOLERANCES- UNLESS OTHERWISE SPECIFIED 公差参考表			深圳市卡雷特科技有限公司 		
X.	±0.30	X.XXX ±0.100	APPD:	TITLE: I Phone 0.6 Pitch 10P I/O CONN 沉板0.80mm	
X.X	±0.20	X.X' ±3.00'	CHECK:	PRODUCT NO: KL02-10F***02-**	
X.XX	±0.15	X.XX' ±1.00'	DRAW:	DATE	SCALE UNIT TYPE PAGE
				2017.07.06	1:1 mm CD 1/1